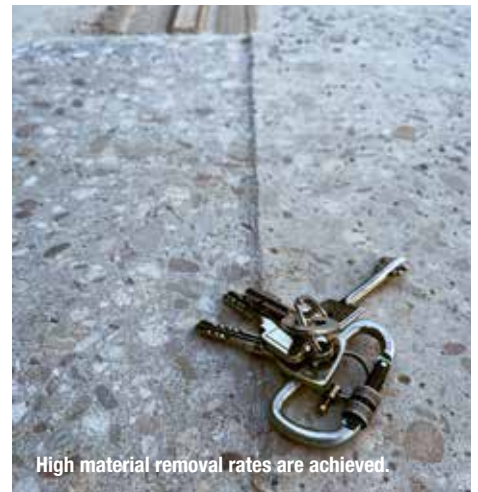


The remote controlled models are equipped with practical specifications.



HTG Ultra machines are designed for fast and precise grinding.



High material removal rates are achieved.

NEW HTG 'ULTRA' GRINDER SERIES

HTG Europe GmbH introduced the HTG Ultra series at bauma, a range of grinding machines specifically developed for the European market. With refined engineering and practical features for jobsite use, the machines have quickly drawn attention from contractors, rental companies, and distributors alike.

Surface preparation contractors for narrow or small surfaces and edgework often rely on machines with a working width of around 25cm. The HTG 250 Ultra and the more powerful HTG CG 250 Ultra (5.5kW) have shown that competitive pricing and solid performance are not mutually exclusive. In the 40–50cm category, the HTG 460 Ultra and the heavier HTG 550 Ultra are said to have attracted significant interest. The former is designed with the ability to deliver high performance from a standard 230v power source. This makes it particularly suitable for confined areas or job sites with limited electrical capacity - an increasingly common challenge across many trades.

Heavy duty performance

Larger models such as the HTG 680 Ultra and HTG 820 Ultra are said to be receiving positive reviews, especially from contractors upgrading from traditional three disc grinders. The combination of a low centre of gravity and a direct drive system, eliminating belt transmission losses, is designed to deliver consistent torque and high removal rates. Whether used for aggressive coatings removal on parking decks or for fine polishing of concrete and natural stone, the four disc configuration covers a wide range of demanding applications. The three disc version of the HTG 680 however remains a preferred choice among many professionals in

floor prep and renovation. Thanks to its focused weight distribution and narrower working width, it offers high material removal capacity with less risk of over grinding sensitive substrates.

Operator support and productivity

The remote controlled HTG 680 RC and HTG 820 RC are designed to help reduce physical strain on workers, especially on large scale or repetitive jobs. Starting in Q4 2025, the lineup will be expanded by the HTG 550 RC

Ultra, bringing remote controlled functionality to the mid-size segment. For users who prefer a simpler, hands on interface, the HTG 680 SP Ultra and HTG 820 SP Ultra offer a robust twin wheel motor drive system without the need for remote control. Directional inputs are given via ergonomic push buttons, significantly reducing manual effort during coarse grinding work.

Looking ahead

In late summer 2025, HTG introduced the HTG Tank 1500 Ultra to the European market.

Designed for areas above 1,000m², this machine offers a 1.5m working width, integrated dust extraction, and remote control operation making it suitable for large commercial and industrial surfaces.

Logistical and technical hub

HTG Europe GmbH, based in Germany, serves as the central logistics, support and R&D hub for the HTG brand across Europe. It ensures the rapid availability of machines and tooling, provides fast response technical service, and maintains compliance with regional regulations. The company's inhouse training centre offers comprehensive education in product handling, technical support, and application techniques, for both sales partners and users.

HTG Europe GmbH states that market feedback confirms its strategic direction to deliver robust engineering, application focused design, and cost efficient operation. These factors are said to resonate with the needs of today's surface preparation and floor grinding professionals. With further product innovations in the pipeline, the next steps are already in motion.



The HTG Ultra machines.